



17, Western Road,  
Maidstone, ME16 8NE

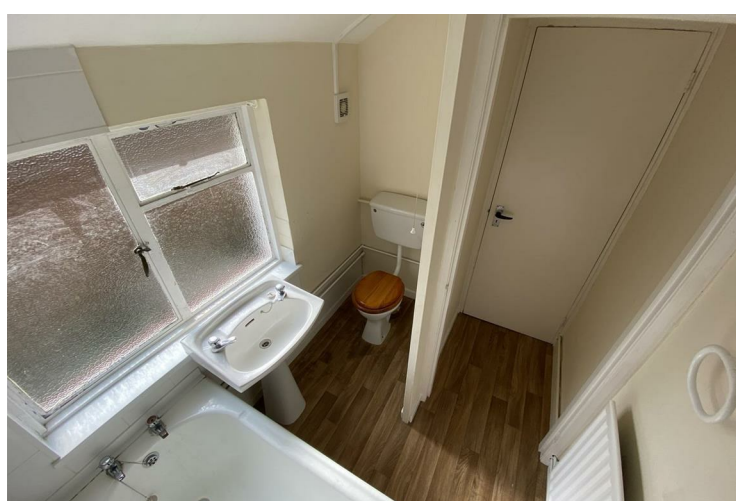
£220,000



- Two Bedroom Terrace House
- Requires some Improvements
- No Onward Chain
- Ideal step onto Property Ladder



17 Western Road, Maidstone, Kent, ME16 8NE



Sealeys Walker Jarvis are pleased to present this two bedroom mid-terrace home just outside Maidstone Town Centre. Comprising, separate Lounge and Dining Room, Kitchen and downstairs bathroom. On the first floor are two double bedrooms, with storage cupboards in both rooms. The property is heated by gas central heating and occupies a decent sized rear garden. Now in need of some modernisation and cosmetic improvements, it is ready to put your own stamp on.

Ideally situated within easy access of transport links including Maidstone Town Centre and the M20 M2 A2 and M25 motorway links are all easily accessed by car. There are local shops and bus services within walking distance.

Offering immediate vacant possession, meaning no onward chain complications to hold you up.

#### **ENTRANCE**

Front door leading into Reception One



#### RECEPTION ONE

3.03m x 3.34m (9'11" x 10'11")

Window to front, meter cupboard. Radiator,

#### RECEPTION TWO

3.34m x 3.11m (10'11" x 10'2".m)

Window to rear, under stair cupboard.

#### KITCHEN

2.42m x 1.87m (7'11" x 6'1")

Window to side, vinyl floor covering. Fitted with a range of beech effect wall and base cupboards, stainless steel sink and drainer, work surfaces, built in oven, hob and extractor, door to garden.

#### BATHROOM

Ground floor bathroom with window to side, w,c, bath, pedestal basin, vinyl floor, radiator.

#### STAIRS/LANDING

Leading to first floor

#### BEDROOM ONE

3.05m x 3.34m (10'0" x 10'11")

Window to front, radiator, built in cupboard.

#### BEDROOM TWO

3.13m x 3.34m (10'3" x 10'11")

Window to rear, radiator built in cupboard housing boiler for hot water and central heating.

#### GARDENS

Good size rear garden, requiring some landscaping. There is a small front garden setting the property back from the pavement.

#### PARKING

On Street Parking.

#### SERVICES

Mains Gas, Electricity, Water and Drainage

Council Tax: Maidstone Borough Council

Band: B 2021/2022 Charges: £1,546.71



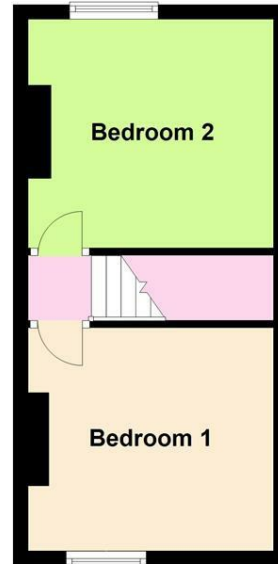


| Energy Efficiency Rating                    |  | Current   | Potential               |
|---|--|-----------|-------------------------|
| Very energy efficient - lower running costs |  |           |                         |
| (92 plus) <b>A</b>                          |  |           | <b>90</b>               |
| (81-91) <b>B</b>                            |  |           |                         |
| (69-80) <b>C</b>                            |  |           |                         |
| (55-68) <b>D</b>                            |  |           |                         |
| (39-54) <b>E</b>                            |  | <b>52</b> |                         |
| (21-38) <b>F</b>                            |  |           |                         |
| (1-20) <b>G</b>                             |  |           |                         |
| Not energy efficient - higher running costs |  |           |                         |
| <b>England &amp; Wales</b>                  |  |           | EU Directive 2002/91/EC |

### Ground Floor



### First Floor



184 Parrock Street  
Gravesend  
Kent  
DA12 1EN

[www.sealeys.co.uk](http://www.sealeys.co.uk)  
Email: [sales@sealeys.co.uk](mailto:sales@sealeys.co.uk)  
Tel: 01474 369368



Agents Note: Whilst every care has been taken to prepare these marketing particulars, they are for guidance purposes only. These details, description and measurements do not form part of a contract and whilst every effort has been made to ensure accuracy this cannot be guaranteed. Interested parties must satisfy themselves by inspection or otherwise as to the correctness of them. Floor plans are not to scale and are for illustration purposes only. Any equipment, fixtures and fittings or any item referred to have not been tested unless specifically stated.